



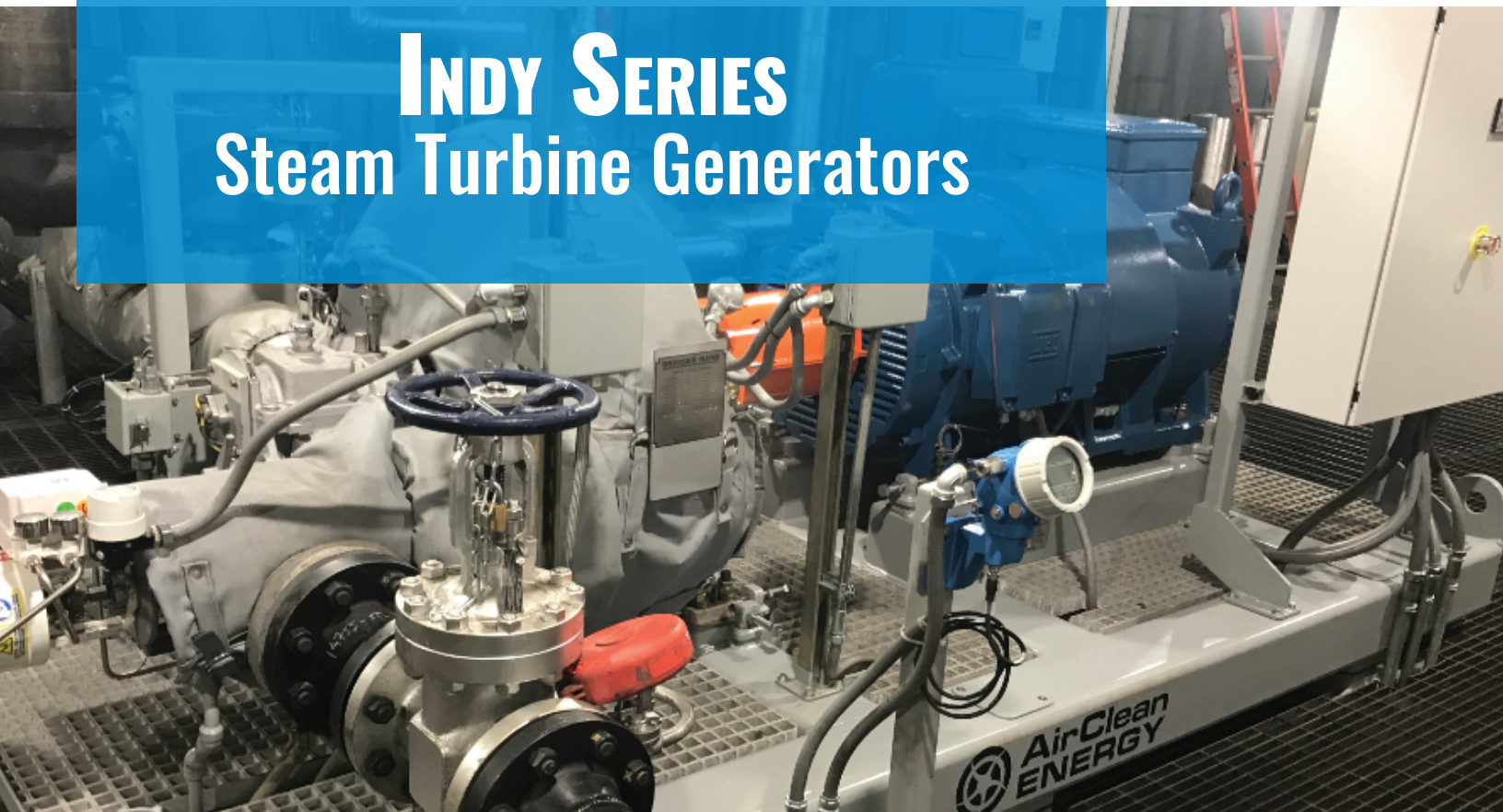
AirClean ENERGY

☎ 206.860.4930

📍 www.aircleanenergy.com

✉ sales@aircleanenergy.com

INDY SERIES Steam Turbine Generators

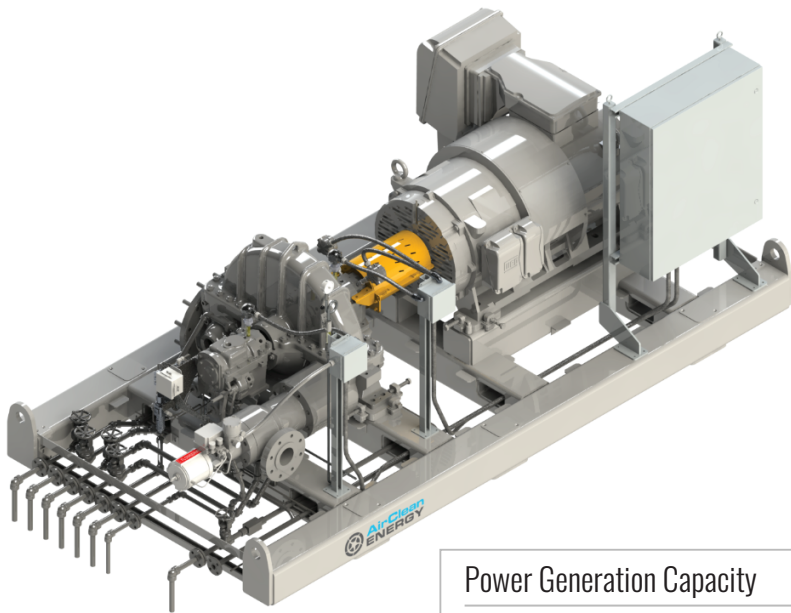


AirClean's Indy STG is a modular, easy to install unit that provides an effective means to letdown your steam pressure through the turbine to generate electricity. This captured energy helps to power your facility and improve your overall efficiency. They are an excellent solution for small power generation opportunities, engineered for peak performance, long-life, and low-maintenance operation. These integrated units include a directly-coupled steam turbine, induction generator and turbine generator control system. Induction generators are ideal for facilities where the power produced by the generator is less than about one-third of a facility's total load. Our expertly designed Indy STG's typically pay for themselves within two to five years.

DESIGN FEATURES

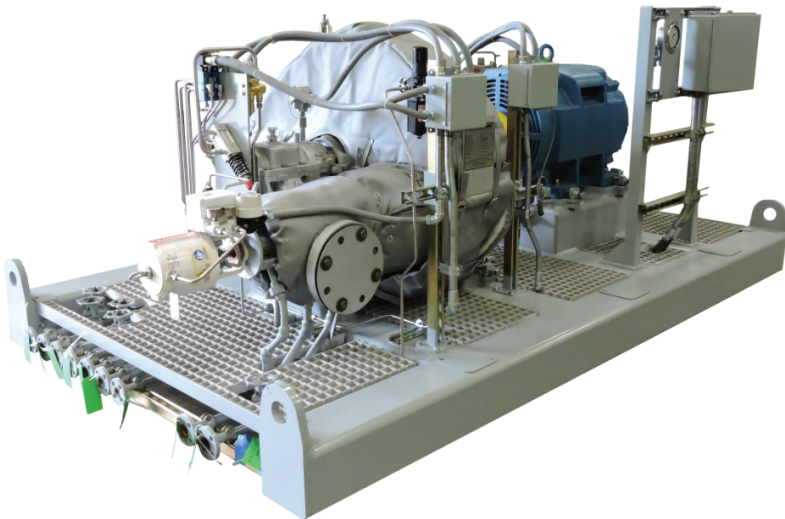
- Robust structural skid
- Pre-wired to junction box
- Pre-piped drains & cooling lines
- Ring-oiled or forced lubrication
- Fully integrated control system
- Remote monitoring capable
- UL, CSA or EU listed controls

Contact us to discuss your unique system!



Indy-RO

Power Generation Capacity	Up to 750 kWe
Voltage	480 VAC / 4,160 VAC / 13,500 VAC
Inlet Pressure	Up to 900 psig
Inlet Temperature	Up to 900°F
Footprint	7' x 12' (typical)
Weight	12,500 lb (typical)



Indy-FL

Power Generation Capacity	Up to 1250 kWe
Voltage	480 VAC / 4,160 VAC / 13,500 VAC
Inlet Pressure	Up to 900 psig
Inlet Temperature	Up to 900°F
Footprint	7' x 12' (typical)
Weight	12,500 lb (typical)